

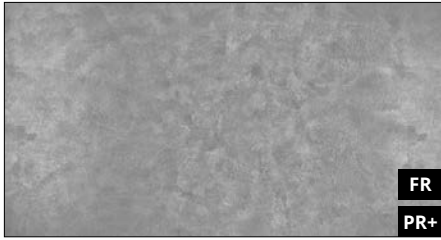
VERSION GB

# FURNITURE | COLLECTION

TRENDS 1.7

**SIBU | DESIGN**  
we decorate.

# FURNITURE | COLLECTION



**DM Classy Silver AR**  
2600 x 1000 / NA 19326 / SA 19337



**DM Classy Bronze AR**  
2600 x 1000 / NA 19011 / SA 19022



**DM Classy Copper AR**  
2600 x 1000 / NA 19199 / SA 19207



**DM Classy Gold AR**  
2600 x 1000 / NA 19010 / SA 19021



**DM Classy Black AR**  
2600 x 1000 / NA 19325 / SA 19336



**DM Iron Age AR**  
2600 x 1000 / NA 19201 / SA 19209



**DM Silent Gold AR**  
2600 x 1000 / NA 19200 / SA 19208

From the outset the idea was, "Not to create everything for everyone, but instead something special for a few." This credo has resulted in our FURNITURE | COLLECTION, a new SIBU range that opens the door to fashionable furniture fronts.

The products with a matt-metallic vintage look offer the furniture industry an exciting alternative to standard single and metallic coloured fronts.

The abrasion and chemical resistance of the products guarantees their problem-free use on furniture fronts or any shop fittings.

As the colours in the current SIBU DESIGN collections are designed to co-ordinate, the FURNITURE | COLLECTION products can be combined perfectly with all the products in the complete SIBU programme.



## Technical Information:

### Product characteristics

	NA	SA
Base material	HIPS	
Surface material	Print	
Material thickness mm	1,0	1,13
Temperature stability	up to 60 °C	
Wet room suitability	■■■■□	
Abrasion resistance	■■■■■■■	
Rolled packable	✓	✓

### Processing

	NA	SA
Cutting, punching	✓	✓
Drilling	✓	✓
Sawing, milling	✓	—
Laser cutting	✓	✓
Hot bending	—	—
Thermoforming	—	—
PVA compressible	✓	—
Smallest bending radius	150 mm	150 mm

### Extra equipment

	NA	SA
Special formats	✓	✓
Maximum length mm	3000	3000
Maximum width mm	1250	1220
Further thicknesses	✓	✓
Cuttings	✓	✓
Magnetic from 3 sheets *	✓	
PVA pre-treatment	✓	—

### Special colors

—
---

### Accessories

SIBUKLE	Spatula A1
Profile groups	1 / 2 / 3 / 5

\* Ground must be a SIBU metal foil SA (ref. 17637, self adhesive).



Photo: fotolia.com

□  
DM Iron Age AR

**NA**  
non-adhesive

**SA**  
strongly adhesive

**FR**  
flame-retardant version available on request

**PR+**  
digital/screen printing possible

■■■■  
wet room suitability

■■■■□  
limited suitability for wet rooms

**AR**  
abrasion-resistant

**SIBU | DESIGN**  
we decorate.

SIBU DESIGN GmbH & CoKG  
Jupiterstraße 8 - 4452 Ternberg - Austria - Tel.: +43 (0) 7256.6025.0  
Fax: +43 (0) 7256.7020 - E-mail: [info@sibu.at](mailto:info@sibu.at) - [www.sibu.at](http://www.sibu.at)

**SIBU**|DESIGN\_1116\_2000